

FOR APPROVAL

STAIRFRIEND STAIRLIFT - FLAT 90 DEG./ SPIRAL 90 DEG. LEFT OUTSIDE

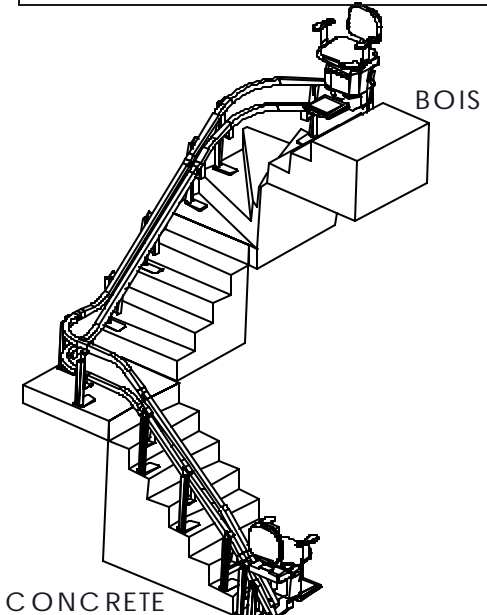
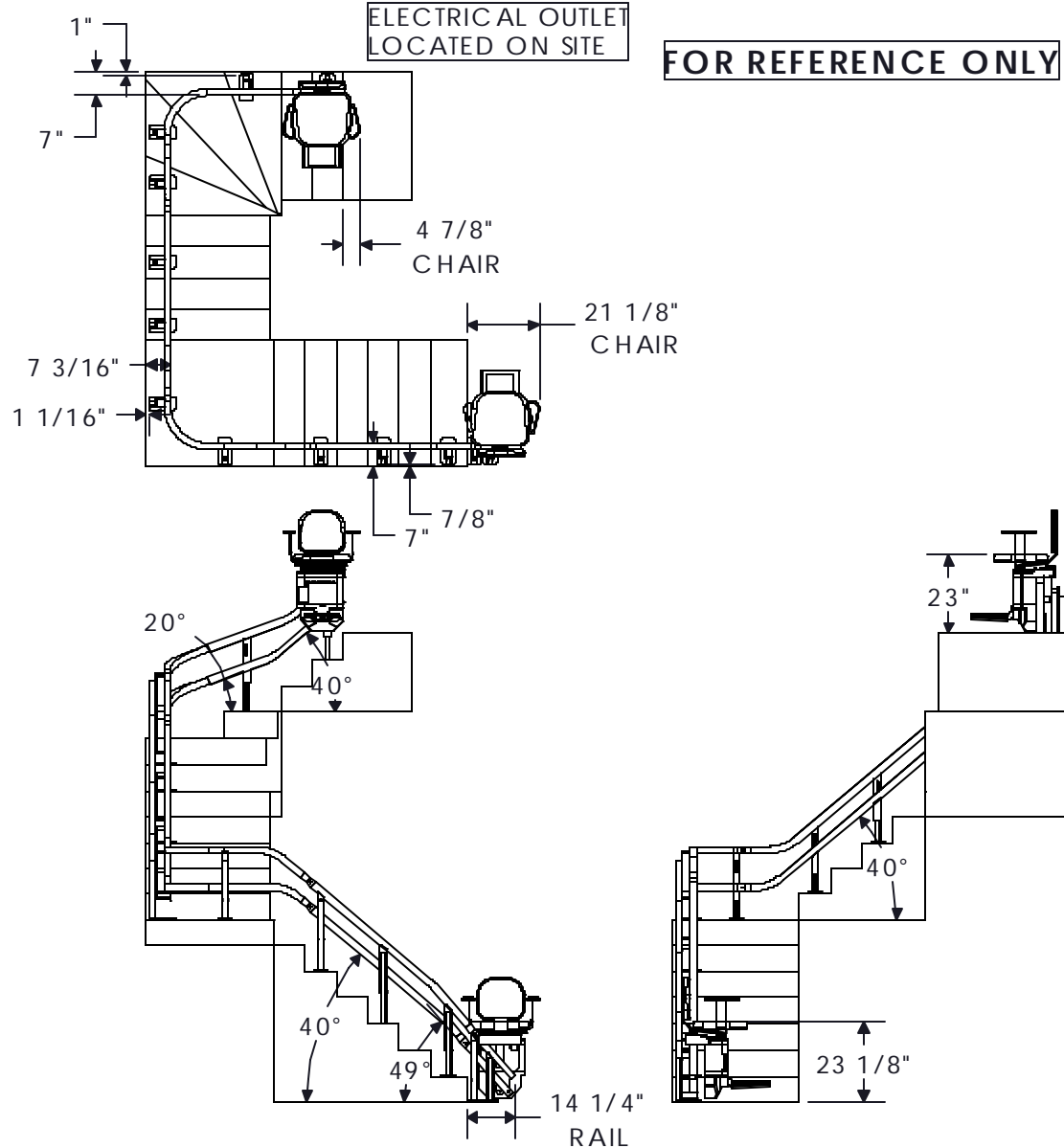
CAUTION: ONCE THE DRAWING IS APPROVED CANCELLATION FEES WILL BE 50% OF JOB PRICING.

APPROVED BY:.....

DATE:.....

CHARGING STATION: EACH END OF RAIL
 CHARGER: 110 VAC, 5A, 60HZ
 ELECTRICAL CORD: 25 FOOT LONG
 BATTERY POWERED: PAIR OF 12V, 7AH
 DC MOTOR: 24V, 3/4HP
 GEAR BOX: 1/40
 DRIVE SYSTEM: RACK & PINION

FOR REFERENCE ONLY



1- NOTE: THE "STAIRFRIEND" CAN BE PLACED OUT OF THE WAY WITH THE REMOTE CONTROL. THE SECOND CHAIR ON THE RAIL IS ONLY THERE FOR REPRESENTATION.

<small>THIS DRAWING IS THE PROPERTY OF SAUWRIA INC. IT IS TO BE USED ONLY FOR THE PROJECT AND SITE SPECIFICALLY IDENTIFIED. IT IS NOT TO BE REPRODUCED OR TRANSMITTED IN ANY FORM OR BY ANY MEANS, ELECTRONIC OR MECHANICAL, INCLUDING PHOTOCOPYING, RECORDING, OR BY ANY INFORMATION STORAGE AND RETRIEVAL SYSTEM.</small>			
PROJECTION 	TO LEANING IS GENERALLY IN THE DIRECTION OF THE LEANING IS FRAC 1/32" DEC 3 3 30 60" 3 3 30 60" ANG 30° 3 3 30 60"		
ALL DIMENSIONS ARE IN INCHES			
ECHELLE SCALE NTS	DESSINÉ PAR DRAWN BY NICOLAS H J	MODEL STAIRFRIEND	
VÉRIFIÉ APPROVED *****	DATE 2008-07-12	SERVICES INDUSTRIELS SAUWRIA INC.	
DESSIN/DWG NO JOB N	REVU 3	PAGE 1/2	TITRE/TITLE DEALER JOB NAME